

Location card: **L0908M - Brera Location n°CR09**



CODE: L0908M

DISTRICT: brera

TOTAL SQ.M.: 330

HIGHT: 5m

FLOOR: 1

ROOMS NUMBER: 4

ENTRANCE ON STREET: No

ENTRANCE FROM COURTYARD: Si

TOTAL CAPACITY: 300 people

CONTACT

website: <http://breralocation.com/location-rent/>

email info@breralocation.com

tel. 0236638150

[Link scheda location Online](#)

DESCRIPTION:

Exhibition space totaling 330 sq m + 60 of gardens of which 270 mt available or divisible, currently used as a contemporary art gallery.

Located inside an turn of the century building is adjacent to the central Via Solferino and at the heart of Brera (MM 2 Moscova).

Is composed of a portion, open space, 4 rooms, 3 bathrooms, office printing and / or catering. It has 3 lighting systems with CCTV cameras to share events with garden and video projections.

PRICE

daily: non dichiarato

fuorisalone: non dichiarato

TECHNICAL EQUIPMENT

Caratteristiche Tecniche:

Video System: telecamere CCTV - telecamere a Circuito Chiuso

Wi-fi: Si

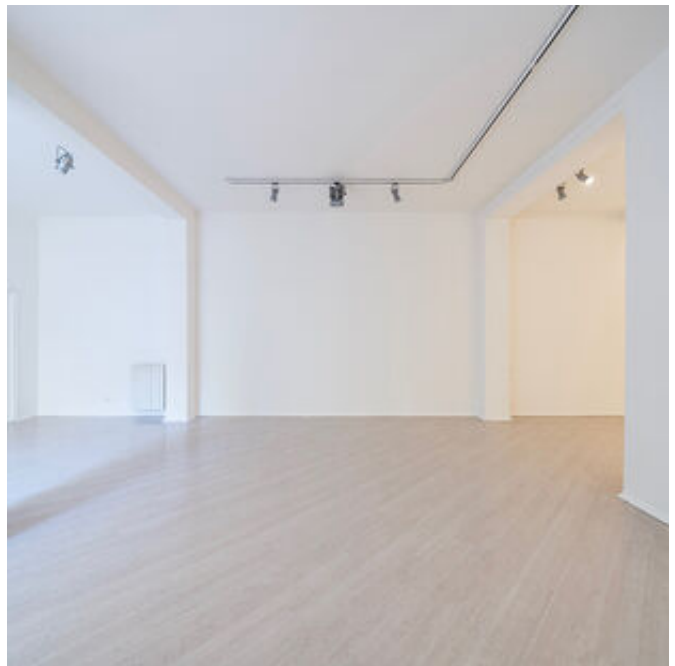
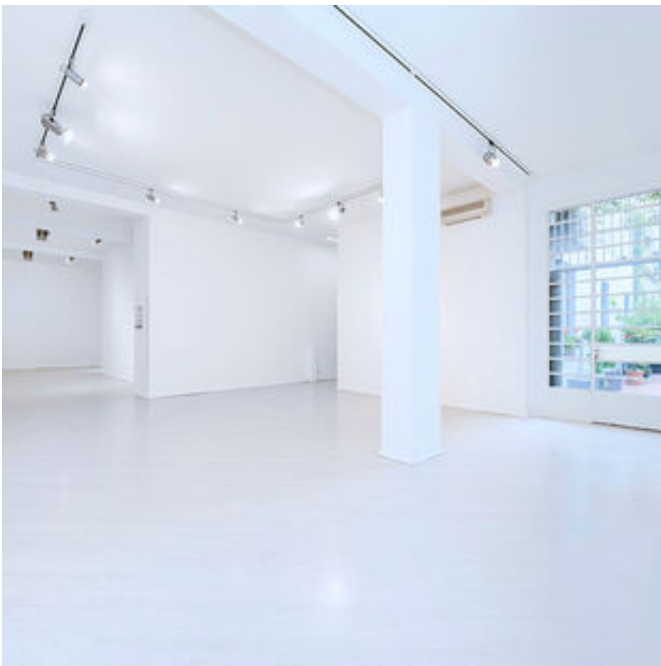
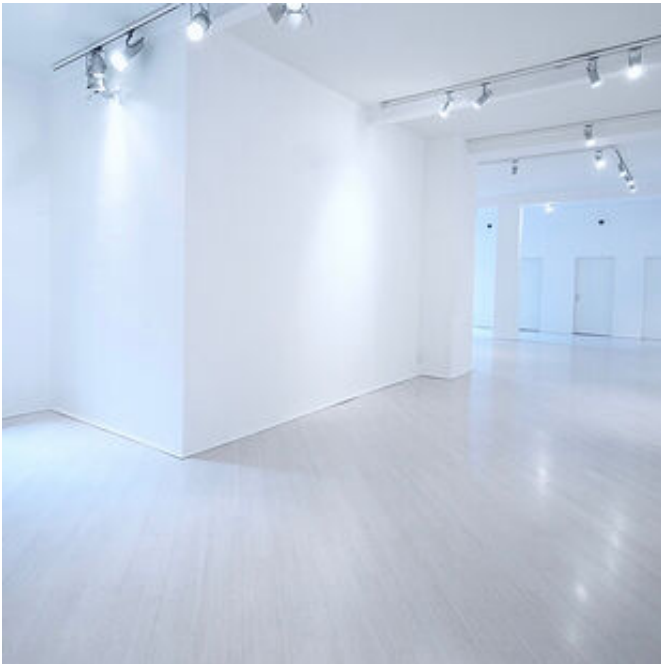
Servizi:

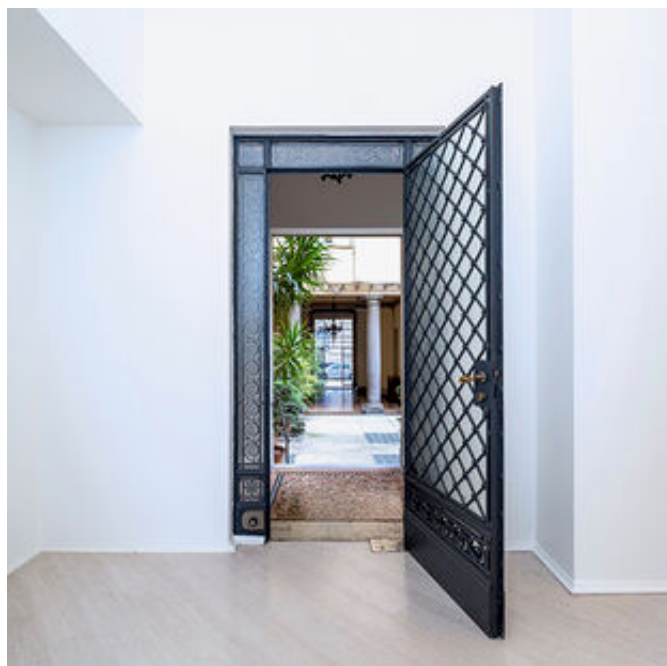
Area Catering: Sì
Aria condizionata: Sì
Riscaldamento: Sì
Servizio di pulizia: Sì

HOW TO REACH US

via Lovanio 0 Milano 20100 MI
MM1-MM2- Mezzi in superficie

Location card: **L0908M - Brera Location n°CR09**







Location card: **L0908M - Brera Location n°CR09**

Per qualsiasi dubbio e richiesta potete contattarci via mail e telefono.

Studiolabo S.r.l.
Via Palermo, 1 Milano
tel. 02 36 63 81 50
www.milanolocation.it

Milano Location
Email: info@milanolocation.it
Telefono: +39 02 36 63 81 50

Milanolocation / Studiolabo
Via Palermo, 1 Milano

Supporto diretto
Giulia Gasperini
Telefono: +39 02 36 63 81 50

www.studiolabo.it
www.milanodesignnetwork.it

www.milanolocation.it
www.brerarealestate.it
www.breradesigndistrict.it
www.fuorisalone.it